

From the Benjamin Franklin College Dean's Office



CALENDAR AT A GLANCE

Feb. T Last day to withdraw from a course offered in the first half of the spring term without the
6 course appearing on the transcript.

Feb. T Applications for Yale 2024 Summer Session Abroad close, 11:59 p.m.
6

Feb. F Withdrawal from Yale College on or before this date entitles a student to a rebate of one-
9 half of spring-term tuition (Undergraduate Regulations).

Feb. W Last day to withdraw from a course offered in the first half of the spring term. Last day to
28 convert from a letter grade to Cr/D/F option for a course offered in the first half of the
spring term.

Feb. Th Courses offered in the second half of the spring term begin.
29

Mar. T Applications for 2024 Non-Yale Summer Abroad close, 11:59 p.m.
5

Mar. F Withdrawal from Yale College on or before this date entitles a student to a rebate of one-
8 quarter of the term's tuition (Undergraduate Regulations).

Mar. F Midterm. Spring recess begins after last academic obligation.
8

Mar. F Last day to withdraw from a spring full-term course without the course appearing on the
8 transcript.

Mar. F Deadline to apply for double credit in a single-credit course.
8

Mar. M Classes resume, 8:20 a.m.
25

Apr. T Applications for fall 2024 Term Abroad or 2024–2025 Year Abroad close, 11:59 p.m.
2

Apr. Th Last day to withdraw from a spring second-half course without the course appearing on
4 the transcript.

Change of College Affiliation_2024

The Yale College Dean's Office is accepting change of college affiliation applications from **January 22, 2024 – February 5, 2024 at noon.**

As in previous years, this process is being handled centrally, therefore while your Dean, Head of College, or FROCO may be able to answer some general questions and offer guidance on whether a change is right for you, meeting with your current or prospective college leadership team prior to approval is not necessary or recommended.

This process does not require or invite students to make appeals to their current residential college staff, or that of the college to which they are applying to transfer beyond the information being requested in the form.

Students may request a change of college affiliation by completing [the following form](#):

https://yalesurvey.ca1.qualtrics.com/jfe/form/SV_0CHlkaI3Tif8a22

Please keep the following in mind if you are considering a change of college affiliation transfer:

Transfer requests are not guaranteed, and you are strongly encouraged to have a housing option within your own college should your transfer be declined.

- Approved transfers are effective beginning the 24-25 academic year. Students do not relocate to their new residential college until the fall.
- Transfer applicants DO NOT need to contact their prospective college to meet with either the Dean or Head of College until after their transfer has been accepted.
- Transfer applicants need a current student in the prospective residential college sponsor your transfer. Please note that **any single student may sponsor no more than two candidates to transfer into their college** in an academic year.
- If your transfer is approved it is a binding decision, so please consider your request carefully before submitting your application.
- If your transfer is approved and you later try changing the housing arrangement (i.e. suite configuration) you had committed to on your form, your transfer may be revoked. You may also be subject to the policies and penalties of the applicable residential college housing rules.
- Students will be notified of the transfer on or about two weeks after the form submission deadline.
- The **deadline is Monday, February 5, 2024 at noon and you can access the application via [this form](#).**

Resident Writing Tutor

The Benjamin Franklin Writing Tutor is Lesley Finn. Her office is in Room 24, LL near Stairwell/Entry A. Hours are: Tuesdays 10am - 2pm and Wednesdays 12pm - 4pm (with 2pm - 4pm reserved for BF students only)

To sign up for an appointment go to <https://www.yalewco.com> or email lesley.finn@yale.edu.

Yale Tutoring Resources:

Writing Center/Tutors/Partners: [Writing Tutoring and Programs | Poorvu Center for Teaching and Learning \(yale.edu\)](#)

Sc/QR Tutoring: [Small-Group and 1-1 Tutoring | Poorvu Center for Teaching and Learning \(yale.edu\)](#)

Language Tutoring: [Center for Language Study | Poorvu Center for Teaching and Learning \(yale.edu\)](#)

Academic Strategies: [Academic Strategies Program | Poorvu Center for Teaching and Learning \(yale.edu\)](#)

Advising Resources: [Welcome | Advising Resources \(yale.edu\)](#)

Course Change Forms

Online Course Change Notice forms will be available on the [University Registrar's Office website](#) for you to request course withdrawals and late additions. The normal \$5 administrative fee will apply to all course withdrawals and late additions, including late adds due to instructor permission granted after add/drop period has closed.

Additional course enrollment information, instructions, and FAQs can be found on the [registration website](#). Review your fall enrollment schedule on [Yale Hub](#) or [Degree Audit](#).

Yale Academic Strategies Program/Office of Educational Opportunity

https://yaleconnect.yale.edu/PoorvuAcademicStrategies/club_signup

<https://poorvucenter.yale.edu/academic-strategies-program>

Our mission is to help all Yale undergraduates be active, empowered learners at Yale. Through peer academic mentoring, interactive workshops, and connections to resources, we hope to provide you with the tools that can propel you towards your goals.

STEM Navigators: Want to learn the best practices for succeeding in introductory STEM Courses? Join STEM Navigators, a mentoring network that provides you with information, events, and support to guide you through these crucial first courses. Sign up via this link: [STEM Navigators sign up](#)

Disability Peer Mentorship Program

This program matches students with disabilities with peer mentors who have similar experiences navigating academic life at Yale for individual mentoring. Students can request a mentor via this form: [Disability Peer Mentor Request](#). First-year students can also request mentorship and guidance about Student Accessibility Resources through the [SAS Peer Liaison Program](#).

Meet with our Learning Specialist

Have a learning difference or other condition that affects how you accomplish your academic work? We can talk with you about new approaches for meeting Yale's academic challenges. Contact Karin Gosselink (karin.gosselink@yale.edu) for an appointment.

For First Years: College Transition Videos

Did you know that [diving into your syllabi can help you succeed in your classes](#)? What to learn [the keys to performing well on p-sets](#)? Learn about these topics and more through our college transition videos: <https://poorvucenter.yale.edu/undergraduates/academic-strategies/first-years-workshops-videos-events>

Individual Mentoring

Get organized for the semester by meeting with an [Academic Strategies Mentor](#). Mentors will help you develop a weekly study routine, offer strategies for approaching complicated readings and p-sets, and help you develop a plan for prepping for those first exams. Our online mentoring schedule is live. If you'd like to schedule a meeting before then, please email us at academicstrategies@yale.edu.

Workshops

Our famous workshop sessions are available in person and online! Register via the YaleConnect links below. FYI: Poorvu CTL M104A is upstairs from the York Street Entrance to Sterling Memorial Library. Poorvu CTL 120 A, B, C, and 121 are the classrooms on the first floor. Questions? Contact us at academicstrategies@yale.edu.

STEM Navigators Study Hall

[Sun, Feb. 4, 2-5 pm, Poorvu CTL Room 120A](#)

Snacks? While studying and meeting peers? Come complete your p-sets, study, and meet your peers in your STEM courses. Snacks and peer mentors are here to help you with any questions about majors, summer opportunities, or classes to take in the future!

NOTE: Tutoring NOT provided by mentors!

STEM Navigators: Biochemistry, Biophysics Lab Techniques

[Mon, Feb. 5, 5-6 pm, Poorvu CTL Room 120A](#)

Are you unfamiliar with biochemistry & biophysics lab techniques and would like more exposure/explanation of concepts from the course? Our STEM graduate mentors are here to help! Come to this workshop for clarification on the most confusing and tested lab techniques for introductory biochemistry and/or biophysics courses!

Mellon Mays Bouchet Application Workshop

[Mon, Feb. 5, 7-8 pm, Poorvu CTL Room M104A](#)

[Tues, Feb. 6, 4-5 pm, Poorvu CTL Room M104A](#)

Get started or bring the work you've done on your Mellon Mays Bouchet application to a workshop with Academic Strategies mentors and writing specialists for feedback, conversation, and guidance on how to refine and revise.

Imagining Your Summer - For Student Athletes

[Mon, Feb. 5, 8-9 pm, Poorvu CTL Room 120A](#)

Interested in summer study abroad, fellowships, or internships, but don't know how to get started? Hear from students who have done these things to help you identify some possible summer opportunities. You will leave with a clearer idea of what is possible and the resources you can access to make your vision happen. Now is the perfect time to start planning!

Getting the Most Out of Mentorship

[Mon, Feb. 5, 8-9 pm, Poorvu CTL Room 120A](#)

Join Yale undergraduates for a conversation on how to make the most of any mentorship opportunity, including peer, graduate student, faculty, and alumni mentorship.

STEM Navigators: "Let's Join a Lab": Write Your Proposal

[Tue, Feb. 6, 5-6 pm, Poorvu CTL Room 120A](#)

This workshop is part of the 3-session series, Let's Join a Lab!

Are you struggling to write your research proposal? Come to this workshop where we'll go over the process together - just bring your research interests and your laptops!

Managing a Heavy Reading Load

[Tue, Feb. 6, 7-8 pm, Poorvu CTL Room M104A](#)

Feeling overwhelmed by piles of reading? Learn some essential strategies to make the most of your limited reading time. Have less stress and create more free time!

Disability Peer Mentor Program Welcome Back with Games & Snacks

[Wed, Feb. 7, 4-5 pm, Poorvu CTL Room 120A](#)

Join the Disability Peer Mentors for a social event with snacks and games. Learn more about the mentorship, discussion groups, and other resources available through the Disability Peer Mentor program.

Office of Educational Opportunity (OEO) Mentor Applicant Open House

[Wed, Feb 7, 7-8 pm, Poorvu CTL Room 120A](#)

Join us for an informal conversation and snacks as you learn more about the job of Academic Strategies Mentor. We are hiring rising juniors and seniors for 2024-2025, and would love to share with you all of the fun and benefits of working as an Academic Strategies Mentor.

The Psychology of Time Management

[Wed, Feb. 7, 7-8 pm, Poorvu CTL Room M104A](#)

Ever wondered why it can be hard to manage your time--even when you have already learned the experts' tips and tricks? Come to this workshop to find out why! You will learn about some of the major cognitive obstacles to organizing your time and take away a set of mental tools for increasing your awareness of these common thought processes so that they can be prevented or interrupted.

Summer Fellowships and Funding Information Session 2

[Thu, Feb. 8, 4-5 pm, Poorvu CTL Room 120C](#)

Planning your Summer 2024? Learn about fellowships and other funding options for independent projects, research, language study, and more!

Call for Nominations

Yale University Seton Elm-Ivy Awards

Due 2/19 at 5pm EST

These awards recognize outstanding contributions by members of the New Haven and Yale University communities to strengthen the partnership between "town and gown." Elm Awards are given to members of the broader New Haven community, and Ivy Awards are given to Yale faculty, staff, and students. The Combined Elm and Ivy Award honors those who, on a long-term basis, have served both Yale University and the City of New Haven with special distinction.

Nominations are sought to recognize individuals who provide exemplary service to further strengthen the relationships among the New Haven and Yale University communities.

Click [HERE](#) for nomination form.

Nomination Deadline:

Monday February 19, 2024 at 5pm EST

**Yale
Students...**

**Final Week to
apply to
100+ summer
internships**

**[tinyurl.com/
BeASummerBulldog](https://tinyurl.com/BeASummerBulldog)**



Deadline Feb. 8, 2024



Summer Bulldogs

Yale

Dwight H. Terry FORUM

Ethics of Knowledge-Making

THE 2024 TERRY FORUM

THE PLACE OF THE LIBERAL ARTS IN A CHANGING CLIMATE

WEDNESDAY, FEBRUARY 14
4-6PM

Panelists:

Anthony Grafton, Princeton University
Hi'ilei Hobart, Yale University
Gregory Marks, Hostos CUNY
Stephanie Pfirman, Arizona State University
J. T. Roane, Rutgers University

Moderators:

Ana Keilson, Gull Island Institute
Justin Reynolds, Gull Island Institute

Kline Tower

219 Prospect St, New Haven

Free and open to the public

Reception to follow

terrylecture.yale.edu

Please note this event will be
recorded.

VOLUNTEERS NEEDED!

**BIG BROTHERS BIG SISTERS
PROGRAM AT TRUMAN**

01.

**1-1 MENTORSHIP
PROGRAM**

02.

THURSDAYS 2:30-4:30

03.

**TRUMAN SCHOOL,
NEW HAVEN PUBLIC
SCHOOL SYSTEM**

04.

**TRANSPORTATION
PROVIDED FROM PHELPS
GATE**

REACH OUT TO [SOPHIA.DEOLIVEIRA@YALE.EDU](mailto:sophia.deoliveira@yale.edu) WITH QUESTIONS!



SCAN TO APPLY



Volunteers Needed at a New Haven Public School

Truman School

Thursdays 2:30-5:30

114 Truman Street

Located in the Hill neighborhood of New Haven, Truman School serves 485 students in grades K-8. Over 80% of students are low income and many are new to New Haven and learning English as a second language. We are seeking 10-15 Yale students willing to make a full year commitment to tutoring and mentoring a Truman student. Training will be provided by Big Brothers Big Sisters and transportation to and from the school will be provided by Dwight Hall.

The enrollment process for volunteers includes an **application**, a brief informational interview, and a zoom training. Apply now if you would like to join a deeply committed group of educators and help these students succeed!

Questions? Reach out to sophia.deoliveira@yale.edu.

THE SHARE CENTER

TRAUMA-INFORMED YOGA FOR SURVIVORS SPRING 2024

Facilitated by: Nikki Adams & Gina Roch



This program will provide survivors a means of becoming reacquainted with their bodies, help them become grounded in the present moment, and cultivate resilience.

Each class offers survivors a supportive and compassionate space, integrates empowering language and is grounded in the frameworks of safety, trust, choice, collaboration, and cultural competence.

The movements and breathwork are thoughtfully crafted to help uncover trauma imprints, support the healing process, nurture the nervous system, and lessen the grip that past experiences of trauma may have on the heart.

WHO? Any Yale student (undergrad, grad, professional) who identifies as a survivor of sexual misconduct.

WHEN? This 8-week program will meet weekly during the months February through April 2024.

WHERE? Groups will meet in person at the CCE training room.

HOW CAN I LEARN MORE?

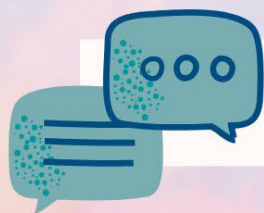
Visit the SHARE [website](#) by scanning the QR code below, email us at sharecenter@yale.edu, or call 203-432-2000.

WHAT ARE THE NEXT STEPS?

To schedule an intake call with one of the program facilitators, email: gina.roch@yale.edu.



Sexual Harassment and Assault Response & Education
sharecenter.yale.edu | 203-432-2000 | 55 Lock Street, New Haven, CT



SHARE Center Support Groups

WHO?

Support groups are open to **Yale students** (undergrad, grad & professional) who have experienced **sexual misconduct** (sexual assault or harassment, IPV & stalking).

WHAT?

Groups will provide a safe space for folks to **connect** with peers and **heal** through multiple modalities, including mindfulness, creative arts, yoga, journaling, and more.

WHEN?

Groups will meet in-person on a weekly basis each semester at a day/time to be determined by participant preference and availability.

HOW?

To learn more about SHARE's support group offerings or sign up to participate, please contact us by email at sharecenter@yale.edu or by phone at 203-432-2000.

Folks are welcome to attend any number of sessions and enrollment will be open throughout the semester!

Welcome

Library workshops and events for Feb 5

THE READING RESILIENCE PROJECT

Since 2015, Yale students have recommended over 300 unique books by and about people of color for Bass Library's Reading Resilience Project. What books would you recommend?

→ Submit a book and view the complete book list to <https://guides.library.yale.edu/Reading-Resilience>.

HOW TO FIND SCHOLARLY ARTICLES | Online

Monday, February 5 at 7:00pm | Register: <https://schedule.yale.edu/event/11953022>

Are you ready to find articles thoroughly and efficiently - without relying on Google Scholar while also avoiding pesky paywalls. In 30-minutes, learn strategies to find the best possible scholarly sources from Yale Library's databases, including Quicksearch Articles+ and subject-specific databases.

HEIDI THE THERAPY DOG | Marx Library

Tuesday, February 6 at 3:00pm | More info: <https://schedule.yale.edu/event/11913704>

Take a break with Heidi, the Yale Public Safety Facility Dog!

DROP-IN WITH LIBRARY PEER MENTORS | Thain Café, Bass Library

Wednesday, February 7 at 8:00pm | More info: <https://schedule.yale.edu/event/11953077>

Get answers to your most pressing questions from Library Peer Mentors, fellow undergraduate students with experience and training doing research at Yale.

Upcoming events from Yale Library

The Reading
Resilience Project



How to Find
Scholarly Articles



Drop-In with Library
Peer Mentors



Heidi the
Therapy Dog



Any student who
attends 3 workshops
will receive a FREE
Yale Library tote bag

Yale University Library
schedule.yale.edu/calendar/instruction



EXPLORE YOUR OPTIONS

Community Wellness Specialists

During a wellness session, we focus on skill building and strategies.

College Care Clinicians

During a therapy session, we focus on therapeutic support and processing.

Check out our common list of topics, we provide support on in a wellness or therapy session, by scanning the QR Code below.

Specialists



Corinne Coia
Silliman #403



Ricky Belizaire
Morse Gatehouse



Cindy Avila
Branford #012A



Whitney Simmons
Hopper #020



Angie Makomenaw
Pierson #049

Clinicians



Zelekya Fowler
WLH #105



Nicole Cepeda
WLH #106



Kayla Reid
TD #007



Lauren Moss-Racusin
Davenport #N11



New Clinician
Branford #012B

SCAN TO GET STARTED



SPRING 2024 EVENT

FRANCIS WRITERS SERIES

Co-sponsored by the Yale English Department's Initiative on Literature and Social Justice and the Traphagen Alumni Speakers Series, Yale College Office of Student Affairs

CARINA DEL VALLE SCHORSKE

INTRODUCED BY ANNE FADIMAN, FRANCIS WRITER-IN-RESIDENCE



Carina del Valle Schorske has written about post-pandemic dance floors, leaving therapy, and Bad Bunny for the *New York Times Magazine*. Critics have called her essays and translations “lyrical,” “fierce,” “intimate,” and “profound.” Her forthcoming book, *The Other Island*, is an exploration of empire, migration, and the transmission of culture in Puerto Rico. The winner of a National Magazine Award, she lives and works between Brooklyn and Puerto Rico.

WEDNESDAY, FEBRUARY 7, 2024 / 6:00 PM
BRANFORD COMMON ROOM

Yale Degree Audit

Yale Degree Audit is a web-based tool that calculates and displays how an individual student's courses may count toward the requirements for the bachelor's degree. The degree audit enables students to monitor their own progress toward the completion of degree requirements. It also helps students, and their advisers discuss course selection for current and future terms more meaningfully by clarifying what requirements the student still needs to complete. Currently, major requirements are not included in the audit. Log into [Yale Hub](#) to pull up your audit.

Unlike a transcript, your degree audit is an unofficial document provided for your information and convenience. The audit serves as a tool to provide you with helpful and timely information when you are planning your course schedule, discussing your schedule with your adviser, and reviewing your progress toward completing the requirements for the bachelor's degree. Your degree audit is **not** an official academic transcript.

Yale Degree Audit will help you:

- Determine what requirements you need to fulfill in order to complete your bachelor's degree.
- View a list of all courses in which you have enrolled and the distributional designations each course carries.
- View individual course grades and cumulative grade-point average (GPA)